

AN INSTRUMENTAL
STUDY GUIDE

GLARNET

IMPORTANT INFORMATION

NAME: _____ GRADE: _____

INSTRUMENT: _____

STORAGE: _____

FOLDER SLOT #: _____

LESSON GROUP _____

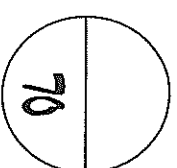
- ① Scales
- ② Melodic
- ③ Technical

CLARINET PERFORMANCE RATING

Column 1: Scales
 Column 2: Melodic
 Column 3: Technical

Tonal/Pitch Rating		
5	5	5
4	4	4
3	3	3
2	2	2
1	1	1

An accuracy of intonation/pitches throughout.
 Nearly accurate with a minimal amount of inaccurate intervals/pitches.
 Accurate intonation at the points of cadence (phrase endings). Otherwise a lack of accurate intervals/pitches.
 Individual pitches include a tonal center; however, with imprecise intervals/pitches.
 Individual pitches lacked a tonal center and performance lacked overall tonality.



Rhythm Rating		
5	5	5
4	4	4
3	3	3
2	2	2
1	1	1

Performance was accurate with precise rhythm.
 Performance was nearly accurate with a minimal amount of imprecise rhythm.
 Performance included a consistent tempo and recognizable meter; however, included short, continuous sections of imprecise rhythm.
 Performance included portions of consistent and inconsistent tempo and recognizable and unrecognizable meter with imprecise rhythms.
 Performance included a lack of consistent tempo and recognizable meter.

Expression Rating		
<input type="checkbox"/>	<input type="checkbox"/>	<input type="checkbox"/>
<input type="checkbox"/>	<input type="checkbox"/>	<input type="checkbox"/>
<input type="checkbox"/>	<input type="checkbox"/>	<input type="checkbox"/>
<input type="checkbox"/>	<input type="checkbox"/>	<input type="checkbox"/>
<input type="checkbox"/>	<input type="checkbox"/>	<input type="checkbox"/>

Performs slurs correctly when indicated.
 Tongues correctly when indicated.
 Has a full and well supported tone quality
 Demonstrates an understanding of dynamics.
 Performs with a sense of phrase, breathing in appropriate places.

Executive Skill		
<input type="checkbox"/>	<input type="checkbox"/>	<input type="checkbox"/>
<input type="checkbox"/>	<input type="checkbox"/>	<input type="checkbox"/>
<input type="checkbox"/>	<input type="checkbox"/>	<input type="checkbox"/>
<input type="checkbox"/>	<input type="checkbox"/>	<input type="checkbox"/>
<input type="checkbox"/>	<input type="checkbox"/>	<input type="checkbox"/>

Feet are placed flat on the floor with back straight and body erect
 Breath support including air control, direction, and speed to perform the upper octave.
 Breath support including air control, direction, and speed to perform the lower octave.
 Breath is taken through the mouth.
 Correct horizontal and vertical instrument alignment with the body.



Embouchure Rating		
5	5	5
4	4	4
3	3	3
2	2	2
1	1	1

Chin is pointed and chin muscles are drawn downward.
 The lower teeth are covered by the fleshy upper part of the lower lip.
 The upper teeth touch the mouthpiece approximately 3/8" from the tip.
 The lips seal the mouthpiece creating equal pressure from all directions.
 A steady stream of air is used, while keeping the corners firm.

Hand Position Rating		
5	5	5
4	4	4
3	3	3
2	2	2
1	1	1

LH – Fleshy part of the thumb diagonal across the clarinet, tip touching the register key.
 RH – Side of the thumb placed under the thumb rest at the base of the fingernail.
 Both hands – Fingers pointed slightly downward while maintaining a natural curve.
 Both hands – Fleshy part of the fingertips is centered on the keys.
 Both hands – Thumbs and wrists are straight, elbows away from the body.

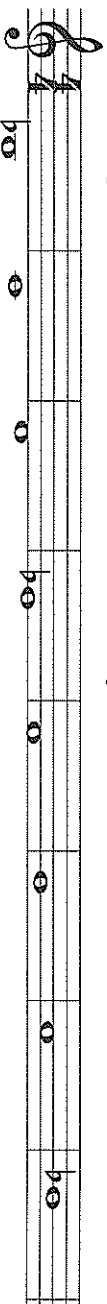
Clarinetts

1

Practice this Page

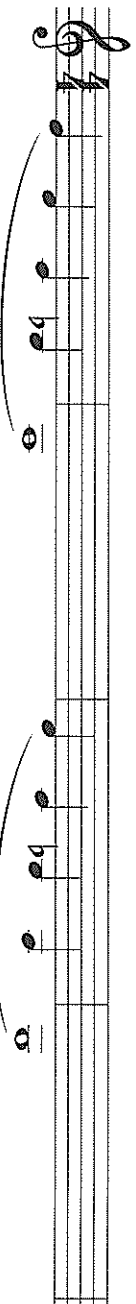
Only on the Days You Eat

1. Bb Major Scale (Concert Ab Major Scale)



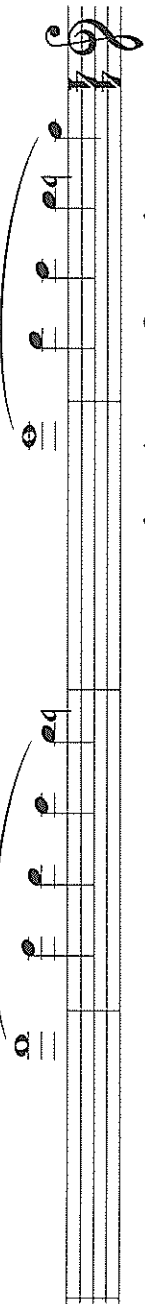
2. Slurs - Low Register

Tongue only the first note of each measure. Play as smoothly as possible.

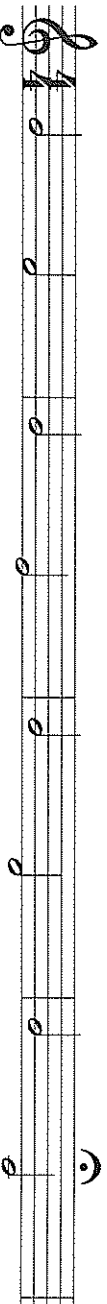


3. More Slurs - Low Register

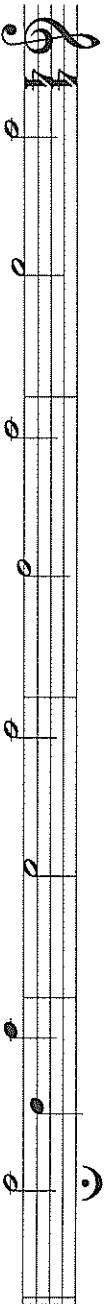
Make sure your fingers completely cover the holes.



4. Intervals

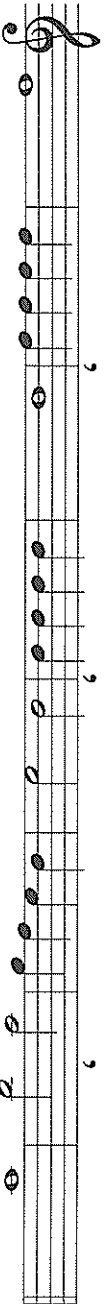
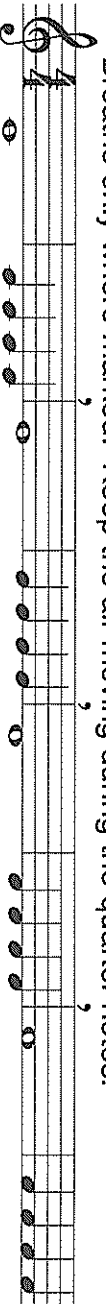


5. More Intervals



6. Sustained Tonguing

Breathe only where marked. Keep the air moving during the quarter notes.





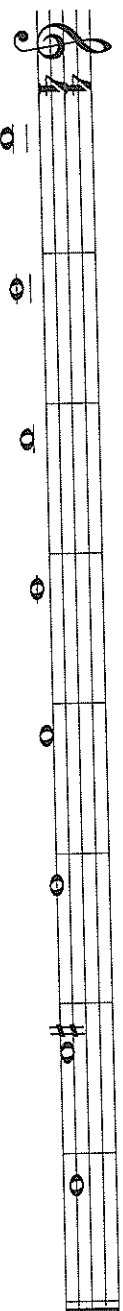
Clarinets

2

Practice this Page

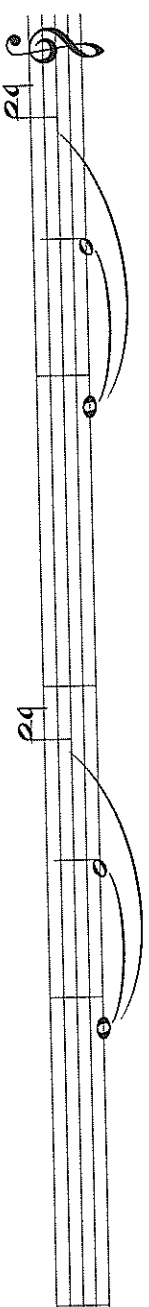
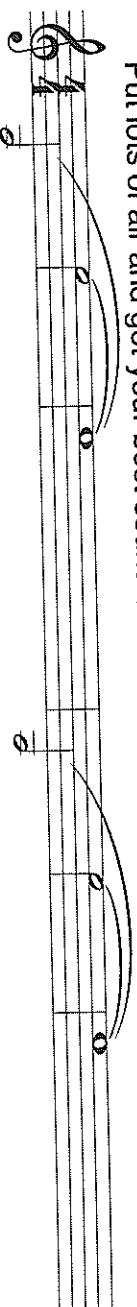
Only on the Days You Eat

1. G Major Scale (Concert F Major Scale)



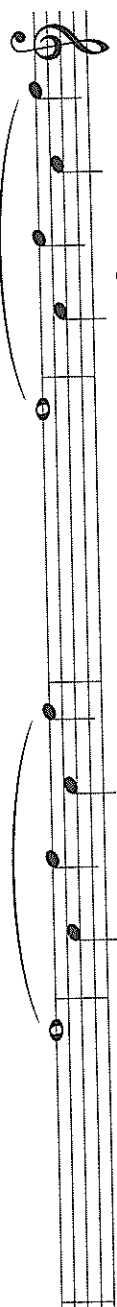
2. Register Slurs

Put lots of air and get your best sound on the low note before pressing the register key.

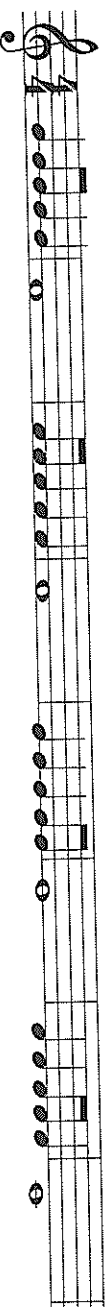


3. Slur - A key

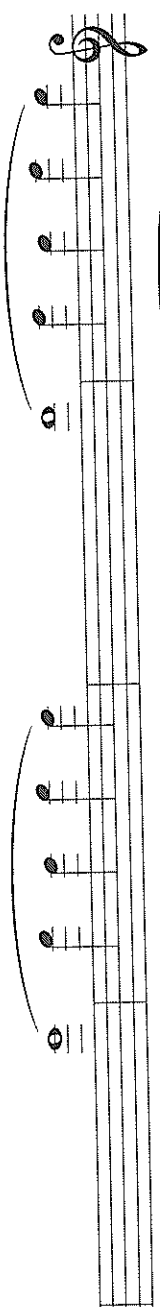
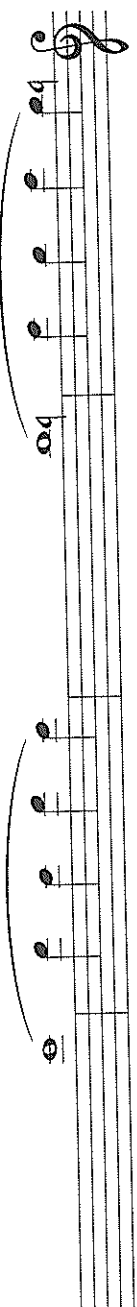
Roll the first finger between the notes.



4. Tonguing



5. Slurs - Low Register





Clarinet

3

Practice this Page

Only on the Days You Eat

1. F Major Scale (Concert Eb Major Scale)

A musical staff in treble clef with a 4/4 time signature. It shows the F major scale (concert Eb major scale) starting on F4. The notes are: F4 (whole), G4 (quarter), A4 (quarter), Bb4 (quarter), C5 (quarter), D5 (quarter), E5 (quarter), F5 (quarter), E5 (quarter), D5 (quarter), C5 (quarter), Bb4 (quarter), A4 (quarter), G4 (quarter), F4 (whole). The notes are marked with slurs and dynamic markings: *f* for the first and last notes, and *p* for the notes in between.

2. Slurs Low Register

A musical staff in treble clef with a 4/4 time signature. It shows a low register exercise. The notes are: F4 (whole), G4 (quarter), A4 (quarter), Bb4 (quarter), C5 (quarter), D5 (quarter), E5 (quarter), F5 (quarter), E5 (quarter), D5 (quarter), C5 (quarter), Bb4 (quarter), A4 (quarter), G4 (quarter), F4 (whole). The notes are marked with slurs and dynamic markings: *f* for the first and last notes, and *p* for the notes in between.

3. Register Slurs

A musical staff in treble clef with a 4/4 time signature. It shows a register slurs exercise. The notes are: F4 (whole), G4 (quarter), A4 (quarter), Bb4 (quarter), C5 (quarter), D5 (quarter), E5 (quarter), F5 (quarter), E5 (quarter), D5 (quarter), C5 (quarter), Bb4 (quarter), A4 (quarter), G4 (quarter), F4 (whole). The notes are marked with slurs and dynamic markings: *f* for the first and last notes, and *p* for the notes in between.

4. Intervals

Hear each note in your head.

A musical staff in treble clef with a 4/4 time signature. It shows an intervals exercise. The notes are: F4 (whole), G4 (quarter), A4 (quarter), Bb4 (quarter), C5 (quarter), D5 (quarter), E5 (quarter), F5 (quarter), E5 (quarter), D5 (quarter), C5 (quarter), Bb4 (quarter), A4 (quarter), G4 (quarter), F4 (whole). The notes are marked with slurs and dynamic markings: *f* for the first and last notes, and *p* for the notes in between.

5. Dynamics

A musical staff in treble clef with a 4/4 time signature. It shows a dynamics exercise. The notes are: F4 (whole), G4 (quarter), A4 (quarter), Bb4 (quarter), C5 (quarter), D5 (quarter), E5 (quarter), F5 (quarter), E5 (quarter), D5 (quarter), C5 (quarter), Bb4 (quarter), A4 (quarter), G4 (quarter), F4 (whole). The notes are marked with slurs and dynamic markings: *f* for the first and last notes, and *p* for the notes in between.

6. Technique

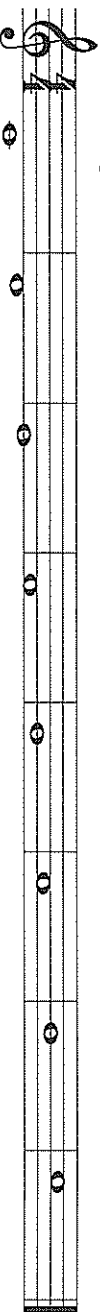
A musical staff in treble clef with a 4/4 time signature. It shows a technique exercise. The notes are: F4 (whole), G4 (quarter), A4 (quarter), Bb4 (quarter), C5 (quarter), D5 (quarter), E5 (quarter), F5 (quarter), E5 (quarter), D5 (quarter), C5 (quarter), Bb4 (quarter), A4 (quarter), G4 (quarter), F4 (whole). The notes are marked with slurs and dynamic markings: *f* for the first and last notes, and *p* for the notes in between.

Clarinet

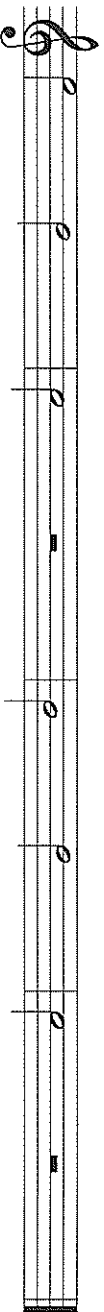
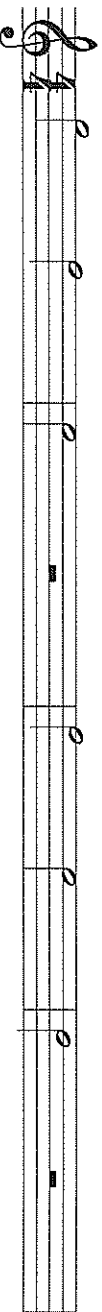
4

Practice this Page
Only on the Days You Eat

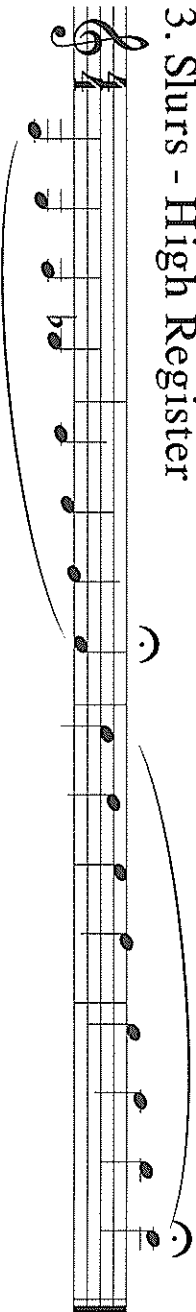
1. C Major Scale (Concert B \flat Major Scale)



2. Register Studies

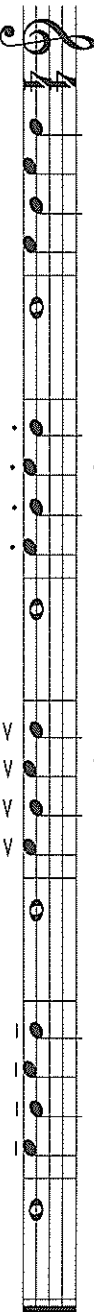


3. Slurs - High Register



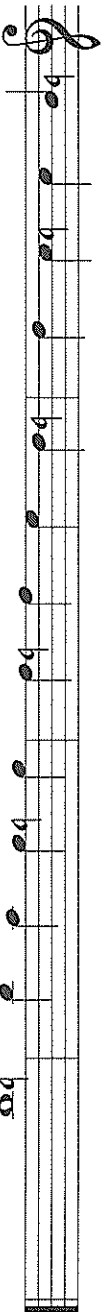
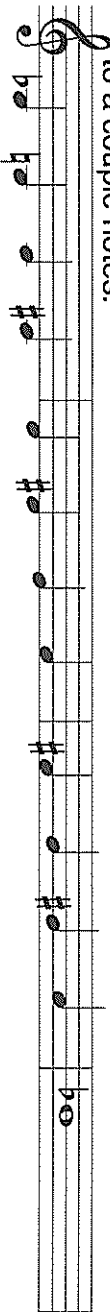
4. Articulation

Follow the articulations closely. Each measure of quarter notes should sound different.



5. Chromatic Scale

Try to do each line in one breath. You may need to look up the fingerings to a couple notes.



Chorale 2 (full band)

Musical score for Chorale 2 (full band) in C major, 1/2 time. The score consists of a single staff with a treble clef. It begins with a *mf* dynamic marking. The melody starts on a whole note C4, followed by a half note D4, and then a quarter note E4. A first ending bracket covers measures 2 and 3, leading to a second ending bracket for measures 4 and 5. The piece concludes with a whole note C4. Measure numbers 1, 2, 3, and 4 are indicated below the staff.

Musical score for Chorale Melody on Chester in C major, 1/2 time. The score consists of a single staff with a treble clef. It begins with a *mf* dynamic marking. The melody starts on a whole note C4, followed by a half note D4, and then a quarter note E4. A first ending bracket covers measures 2 and 3, leading to a second ending bracket for measures 4 and 5. The piece concludes with a whole note C4. A *ritard* marking is placed below the staff at measure 7. Measure numbers 5, 6, 7, and 8 are indicated below the staff.

Chorale Melody on Chester

Musical score for Chorale Melody on Chester in C major, 1/2 time. The score consists of two staves with treble clefs. The top staff is labeled "Subdivision" and the bottom staff is labeled "Bopped". Both staves begin with a *mf* dynamic marking. The top staff contains a melody with first and second endings, ending at measure 4 with a "(cadence)" marking. The bottom staff contains a more rhythmic accompaniment, also ending at measure 4 with a "(cadence)" marking. Measure numbers 1, 2, 3, and 4 are indicated below the staves.

Musical score for Chester (full band) in C major, 1/2 time. The score consists of two staves with treble clefs. The top staff contains a melody with first and second endings, ending at measure 8 with a "(cadence)" marking. The bottom staff contains a more rhythmic accompaniment, also ending at measure 8 with a "(cadence)" marking. Measure numbers 5, 6, 7, and 8 are indicated below the staves.

Chester (full band)

Musical score for Chester (full band) in C major, 1/2 time. The score consists of a single staff with a treble clef. It begins with a *mf* dynamic marking. The melody starts on a whole note C4, followed by a half note D4, and then a quarter note E4. A first ending bracket covers measures 2 and 3, leading to a second ending bracket for measures 4 and 5. The piece concludes with a whole note C4. Measure numbers 1, 2, 3, and 4 are indicated below the staff.

Musical score for Chester (full band) in C major, 1/2 time. The score consists of a single staff with a treble clef. It begins with a *mf* dynamic marking. The melody starts on a whole note C4, followed by a half note D4, and then a quarter note E4. A first ending bracket covers measures 2 and 3, leading to a second ending bracket for measures 4 and 5. The piece concludes with a whole note C4. Measure numbers 6, 7, and 8 are indicated below the staff.

Musical score for Chester (full band) in C major, 1/2 time. The score consists of a single staff with a treble clef. It begins with a *mp* dynamic marking. The melody starts on a whole note C4, followed by a half note D4, and then a quarter note E4. A first ending bracket covers measures 2 and 3, leading to a second ending bracket for measures 4 and 5. The piece concludes with a whole note C4. Measure numbers 9, 10, 11, and 12 are indicated below the staff.

13 14 15 16

Clarinet Fingering Chart

E	F	F# Gb	G	G# Ab	A	A# Bb

B	C	C# Db	D	D# Eb	E	F	F# Gb

G	G# Ab	A	A# Bb	B	C

C# Db	D	D# Eb	E	F	F# Gb	G	G# Ab	A

A# Bb	B	C	C# Db	D	D# Eb	E	F

F# Gb	G	G# Ab	A	A# Bb	B	C

(When more than one fingering is shown, the first is the most common.)