

AN INSTRUMENTAL
STUDY GUIDE

FLUTE

IMPORTANT INFORMATION

NAME: _____ **GRADE:** _____

INSTRUMENT: _____

STORAGE: _____

FOLDER SLOT #: _____

LESSON GROUP _____

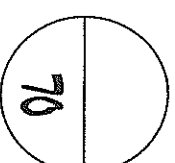
- ① Scales
- ② Melodic
- ③ Technical

FLUTE PERFORMANCE RATING

Column 1: Scales
 Column 2: Melodic
 Column 3: Technical

Tonal/Pitch Rating	
5	5
4	4
3	3
2	2
1	1

An accuracy of intonation/pitches throughout.
 Nearly accurate with a minimal amount of inaccurate intervals/pitches.
 Accurate intonation at the points of cadence (phrase endings). Otherwise a lack of accurate intervals/pitches.
 Individual pitches include a tonal center; however, with inaccurate intervals/pitches.
 Individual pitches lacked a tonal center and performance lacked overall tonality.



Rhythm Rating	
5	5
4	4
3	3
2	2
1	1

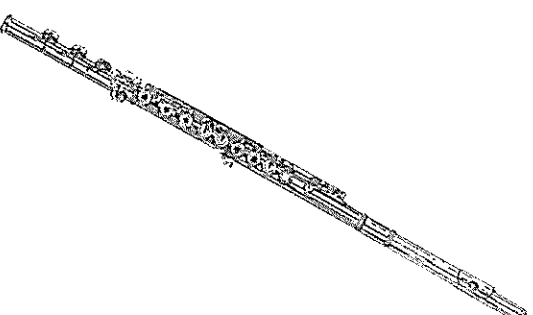
Performance was accurate with precise rhythm.
 Performance was nearly accurate with a minimal amount of imprecise rhythm.
 Performance included a consistent tempo and recognizable meter; however, included short, continuous sections of imprecise rhythm.
 Performance included portions of consistent and inconsistent tempo and recognizable and unrecognizable meter with imprecise rhythms.
 Performance included a lack of consistent tempo and recognizable meter.

Expression Rating	
<input type="checkbox"/>	<input type="checkbox"/>
<input type="checkbox"/>	<input type="checkbox"/>
<input type="checkbox"/>	<input type="checkbox"/>
<input type="checkbox"/>	<input type="checkbox"/>
<input type="checkbox"/>	<input type="checkbox"/>

Performs slurs correctly when indicated.
 Tongues correctly when indicated.
 Has a full and well supported tone quality
 Demonstrates an understanding of dynamics.
 Performs with a sense of phrase, breathing in appropriate places.

Executive Skill	
<input type="checkbox"/>	<input type="checkbox"/>
<input type="checkbox"/>	<input type="checkbox"/>
<input type="checkbox"/>	<input type="checkbox"/>
<input type="checkbox"/>	<input type="checkbox"/>
<input type="checkbox"/>	<input type="checkbox"/>

Feet are placed flat on the floor with back straight and body erect
 Breath support including air control, direction, and speed to perform the upper octave.
 Breath support including air control, direction, and speed to perform the lower octave.
 Breath is taken through the mouth.
 Correct horizontal and vertical instrument alignment with the body.



Embouchure Rating	
5	5
4	4
3	3
2	2
1	1

Aperture in lips is centered on the embouchure plate.
 Lower lip contacts the embouchure plate and covers 1/4 to 1/3 of the embouchure plate hole.
 Lips are parallel to the flute.
 Air is directed to the opposite edge of the embouchure plate hole in a gentle, concentrated stream.
 Upper lip is relaxed to produce an aperture no more than 1/16" high and 1/2" long.

Hand Position Rating	
5	5
4	4
3	3
2	2
1	1

LH – Thumb on B-natural lever and flute rests at the base of the index finger between the knuckle and 1st joint; pinky rests on the G-sharp key
 RH – Thumb is under the flute between the 1st and 2nd fingers; pinky depresses the D-sharp key; wrist is flat.
 Both hands – Fingers are curved creating a “U” shape between thumbs and index fingers.
 Both hands – Fleshy part of the fingertips is contacting and centered on the keys.
 Both hands – elbows are away from the body and the flute is *slightly* declined.

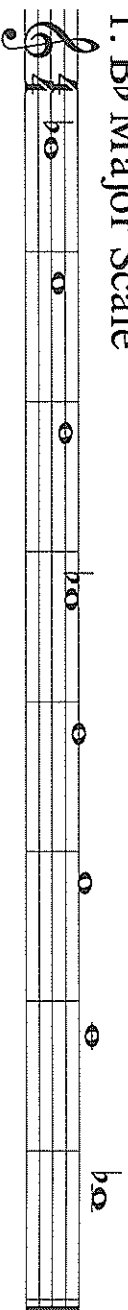


Flurres

1

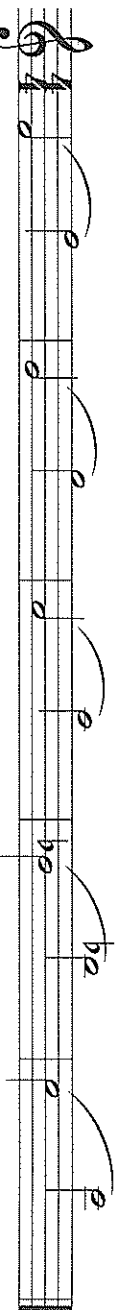
Practice this Page
Only on the Days You Eat

1. Bb Major Scale



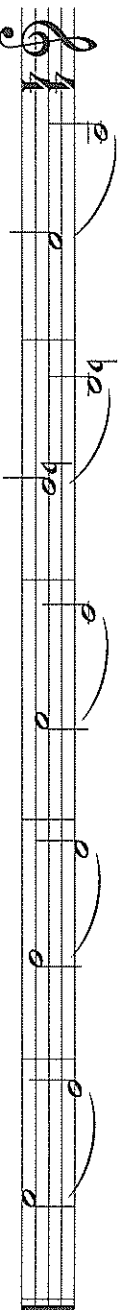
2. Lip Slurs

Tongue only the first note of each measure. Let the notes touch each other.

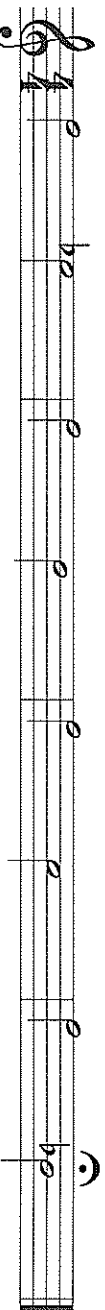


3. More Lip Slurs

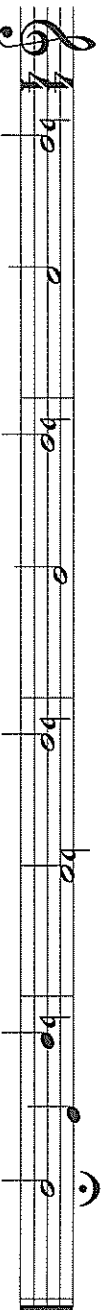
Lip slurs improve your tone, flexibility, and air control.



4. Intervals

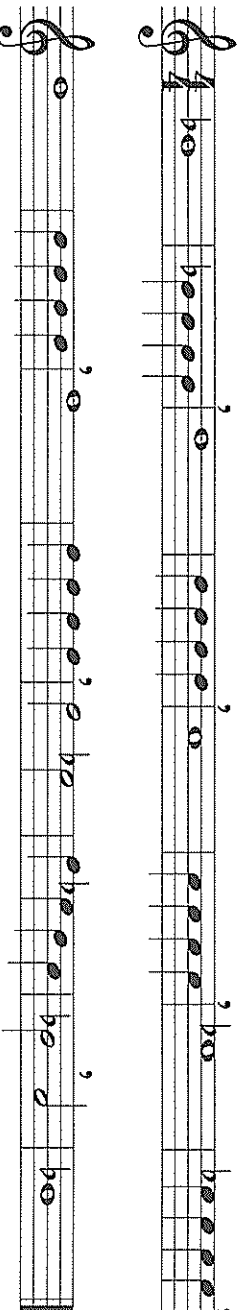


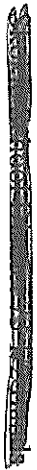
5. More Intervals



6. Sustained Tonguing

Breathe only where marked. Keep the air moving during the quarter notes.





Flurcs

2

Practice this Page

Only on the Days You Eat

1. A \flat Major Scale

2. Lip Slurs

Stay relaxed while playing these slurs. The smoother...the better.

3. Harmonics

Use regular fingering

Use fingering for F

4. Tonguing

5. Slurs - Low Register

Tongue only the first note of each measure.



Flurres

3

Practice this Page

Only on the Days You Eat

1. C Major Scale

A single musical staff in treble clef with a 4/4 time signature. It contains the C major scale: C4 (quarter), D4 (quarter), E4 (quarter), F4 (quarter), G4 (quarter), A4 (quarter), B4 (quarter), C5 (quarter), B4 (quarter), A4 (quarter), G4 (quarter), F4 (quarter), E4 (quarter), D4 (quarter), C4 (quarter).

2. Lip Slurs

A musical staff in treble clef with a 4/4 time signature. It features a sequence of notes with slurs and accents. The notes are: C4 (quarter), D4 (quarter), E4 (quarter), F4 (quarter), G4 (quarter), A4 (quarter), B4 (quarter), C5 (quarter), B4 (quarter), A4 (quarter), G4 (quarter), F4 (quarter), E4 (quarter), D4 (quarter), C4 (quarter). Slurs connect groups of notes, and accents are placed over several notes.

3. More Lip Slurs

A musical staff in treble clef with a 4/4 time signature. It features a sequence of notes with slurs and accents. The notes are: C4 (quarter), D4 (quarter), E4 (quarter), F4 (quarter), G4 (quarter), A4 (quarter), B4 (quarter), C5 (quarter), B4 (quarter), A4 (quarter), G4 (quarter), F4 (quarter), E4 (quarter), D4 (quarter), C4 (quarter). Slurs connect groups of notes, and accents are placed over several notes.

4. Intervals

Hear each note in your head.

A musical staff in treble clef with a 4/4 time signature. It features a sequence of notes with slurs and accents. The notes are: C4 (quarter), D4 (quarter), E4 (quarter), F4 (quarter), G4 (quarter), A4 (quarter), B4 (quarter), C5 (quarter), B4 (quarter), A4 (quarter), G4 (quarter), F4 (quarter), E4 (quarter), D4 (quarter), C4 (quarter). Slurs connect groups of notes, and accents are placed over several notes.

5. Dynamics

A musical staff in treble clef with a 4/4 time signature. It features a sequence of notes with slurs and accents. The notes are: C4 (quarter), D4 (quarter), E4 (quarter), F4 (quarter), G4 (quarter), A4 (quarter), B4 (quarter), C5 (quarter), B4 (quarter), A4 (quarter), G4 (quarter), F4 (quarter), E4 (quarter), D4 (quarter), C4 (quarter). Slurs connect groups of notes, and accents are placed over several notes.

6. Technique

A musical staff in treble clef with a 4/4 time signature. It features a sequence of notes with slurs and accents. The notes are: C4 (quarter), D4 (quarter), E4 (quarter), F4 (quarter), G4 (quarter), A4 (quarter), B4 (quarter), C5 (quarter), B4 (quarter), A4 (quarter), G4 (quarter), F4 (quarter), E4 (quarter), D4 (quarter), C4 (quarter). Slurs connect groups of notes, and accents are placed over several notes.

Flurres

4

Practice this Page

Only on the Days You Eat

1. Eb Major Scale

Musical notation for the Eb Major Scale in 4/4 time. The scale is written on a single staff in treble clef. The notes are: Eb, F, G, Ab, Bb, C, D, Eb. Each note is marked with its corresponding flat symbol.

2. Lip Slurs

Tongue only the first note of each measure. The smoother...the better.

Musical notation for Lip Slurs in 4/4 time. The exercise consists of four measures. Each measure contains a slur over a group of notes, with the first note of the slur being the only note that has a tongue mark. The notes are: Measure 1: Eb, F, G, Ab; Measure 2: Bb, C, D, Eb; Measure 3: F, G, Ab, Bb; Measure 4: C, D, Eb, F.

3. Slurs - Low Register

Musical notation for Slurs - Low Register in 4/4 time. The exercise consists of four measures. Each measure contains a slur over a group of notes. The notes are: Measure 1: Eb, F, G, Ab; Measure 2: Bb, C, D, Eb; Measure 3: F, G, Ab, Bb; Measure 4: C, D, Eb, F.

4. Articulation

Follow the articulations closely. Each measure of quarter notes should sound different.

Musical notation for Articulation in 4/4 time. The exercise consists of four measures. Each measure contains a slur over a group of notes, with each note having a different articulation mark (such as an accent or a breath mark). The notes are: Measure 1: Eb, F, G, Ab; Measure 2: Bb, C, D, Eb; Measure 3: F, G, Ab, Bb; Measure 4: C, D, Eb, F.

5. Chromatic Scale

Try to do each line in one breath. You may need to look up the fingerings to a couple notes.

Musical notation for Chromatic Scale in 4/4 time. The exercise consists of four lines of music. Each line contains a slur over a group of notes, with each note having a different articulation mark. The notes are: Line 1: Eb, F, G, Ab; Line 2: Bb, C, D, Eb; Line 3: F, G, Ab, Bb; Line 4: C, D, Eb, F.

Flute Octave Slurs

Flute

3

9

13

17

21

25

29

Fl.

Fl.

Fl.

Fl.

Fl.

Fl.

Fl.

Octave slurs are the first exercise you should learn for lip flexibility.
The aperture (hole in the lips) should be diamond shaped.
Lower notes need a larger aperture than higher notes.
Always use breath support.

CHORALES

BWV 17 – by J.S. Bach Concert Key of C

The image displays a musical score for a chorale in C major, BWV 17 by J.S. Bach. The score is arranged in four parts, labeled Part 1 through Part 4, on a grand staff. The key signature is one sharp (F#), and the time signature is 3/4. The notation includes a treble clef, a key signature of one sharp, and a 3/4 time signature. The score is presented in a format suitable for teaching, with a solid line for the first part and dotted lines for the subsequent parts. The notes are placed on a five-line staff, and the first part is written in a treble clef. The key signature is indicated by a sharp sign on the F line. The time signature is 3/4. The score is divided into four parts, with Part 1 being the highest and Part 4 the lowest. The notes are placed on the staff lines, and the first part is written in a treble clef. The key signature is indicated by a sharp sign on the F line. The time signature is 3/4. The score is divided into four parts, with Part 1 being the highest and Part 4 the lowest. The notes are placed on the staff lines, and the first part is written in a treble clef. The key signature is indicated by a sharp sign on the F line. The time signature is 3/4.

BWV 17 – by J.S. Bach

Concert Key of F

Part 1

Part 2

Part 3

Part 4

Part 1

Part 2

Part 3

Part 4

BWV 116 – by J.S. Bach

Concert Key of Bb

Part 1
Part 2
Part 3
Part 4

This section contains the first four parts of the musical score. Each part is written on a five-line staff with a treble clef and a key signature of two flats (Bb). The time signature is common time (C). The notation includes various rhythmic values, including eighth and sixteenth notes, and rests. The parts are arranged vertically, with Part 1 at the top and Part 4 at the bottom. The score is divided into measures by vertical bar lines.

Part 1
Part 2
Part 3
Part 4

This section contains the first four parts of the musical score, continuing from the previous section. Each part is written on a five-line staff with a treble clef and a key signature of two flats (Bb). The time signature is common time (C). The notation includes various rhythmic values, including eighth and sixteenth notes, and rests. The parts are arranged vertically, with Part 1 at the top and Part 4 at the bottom. The score is divided into measures by vertical bar lines.

BWV 116 – by J.S. Bach

Concert Key of Eb

Part 1

Part 2

Part 3

Part 4

Part 1

Part 2

Part 3

Part 4