

IMPORTANT INFORMATION

NAME: _____ GRADE: _____

INSTRUMENT: _____

STORAGE: _____

FOLDER SLOT #: _____

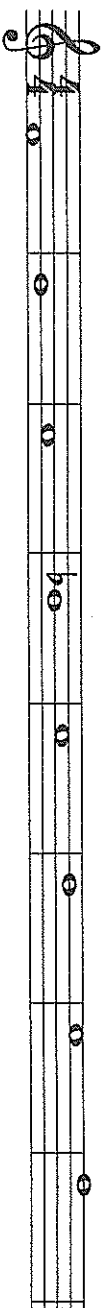
LESSON GROUP _____

Oboes

1

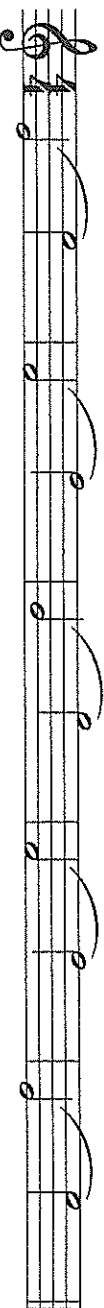
Practice this Page
Only on the Days You Eat

1. F Major Scale



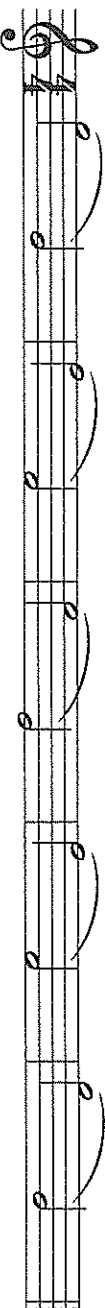
2. Octave Slurs

Tongue only the first note of each measure. Play as smoothly as possible.

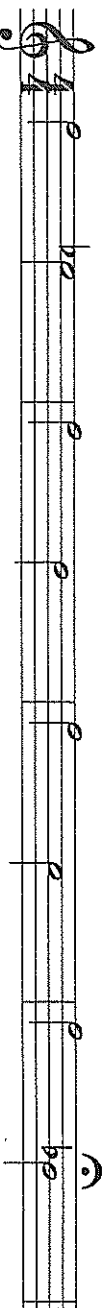


3. More Lip Slurs

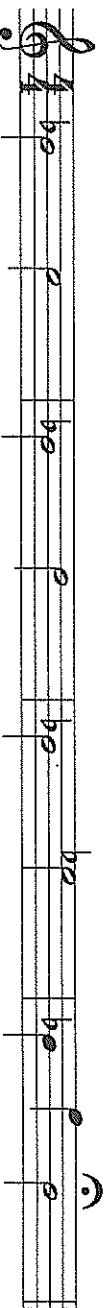
Lip slurs improve your tone, flexibility, and air control.



4. Intervals

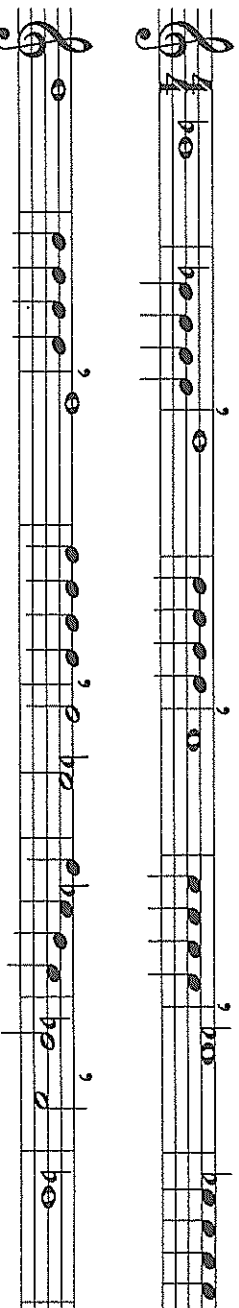


5. More Intervals



6. Sustained Tonguing

Breathe only where marked. Keep the air moving during the quarter notes.





Oboes

2

Practice this Page
Only on the Days You Eat

1. A \flat Major Scale

A musical staff in 4/4 time with a treble clef. The key signature has two flats (B \flat and E \flat). The scale is written as a sequence of whole notes: A \flat (below staff), B \flat (below staff), C (below staff), D (below staff), E \flat (below staff), F (below staff), G (below staff), A (below staff), B \flat (below staff), C (below staff), D (below staff), E \flat (below staff), F (below staff), G (below staff), A (below staff), B \flat (below staff), C (below staff).

2. Octave Slurs

Stay relaxed while playing these slurs. The smoother...the better.

A musical staff in 4/4 time with a treble clef. The key signature has two flats. The scale is written as a sequence of whole notes. Slurs are placed over the first four notes of each octave: A \flat , B \flat , C, D; E \flat , F, G, A; B \flat , C, D, E \flat ; F, G, A, B \flat ; C, D, E \flat , F; G, A, B \flat , C.

3. Slurs - Low Register

A musical staff in 4/4 time with a treble clef. The key signature has two flats. The scale is written as a sequence of whole notes. Slurs are placed over the first four notes of each octave: A \flat , B \flat , C, D; E \flat , F, G, A; B \flat , C, D, E \flat ; F, G, A, B \flat ; C, D, E \flat , F; G, A, B \flat , C.

4. Tonguing

A musical staff in 4/4 time with a treble clef. The key signature has two flats. The scale is written as a sequence of eighth notes. Tonguing marks (vertical lines) are placed under the first note of each measure: A \flat , B \flat , C, D; E \flat , F, G, A; B \flat , C, D, E \flat ; F, G, A, B \flat ; C, D, E \flat , F; G, A, B \flat , C.

5. More Slurs - Low Register

Tongue only the first note of each measure.

A musical staff in 4/4 time with a treble clef. The key signature has two flats. The scale is written as a sequence of eighth notes. Slurs are placed over the first four notes of each octave: A \flat , B \flat , C, D; E \flat , F, G, A; B \flat , C, D, E \flat ; F, G, A, B \flat ; C, D, E \flat , F; G, A, B \flat , C.



Oboes

4

Practice this Page

Only on the Days You Eat

1. Eb Major Scale

2. Octave Slurs

Tongue only the first note of each measure. The smoother...the better.

3. Slurs - Low Register

4. Articulation

Follow the articulations closely. Each measure of quarter notes should sound different.

5. Chromatic Scale

Try to do each line in one breath. You may need to look up the fingerings to a couple notes.