

AN INSTRUMENTAL

STUDY GUIDE

**SAXOPHONE**

# IMPORTANT INFORMATION

NAME: \_\_\_\_\_ GRADE: \_\_\_\_\_

INSTRUMENT: \_\_\_\_\_

STORAGE: \_\_\_\_\_

FOLDER SLOT #: \_\_\_\_\_

LESSON GROUP \_\_\_\_\_

- ① Scales
- ② Melodic
- ③ Technical

## SAXOPHONE PERFORMANCE RATING

Column 1: Scales  
 Column 2: Melodic  
 Column 3: Technical

### Tonal/Pitch Rating

|   |   |   |
|---|---|---|
| 5 | 5 | 5 |
| 4 | 4 | 4 |
| 3 | 3 | 3 |
| 2 | 2 | 2 |
| 1 | 1 | 1 |

An accuracy of intonation/pitches throughout.  
 Nearly accurate with a minimal amount of inaccurate intervals/pitches.  
 Accurate intonation at the points of cadence (phrase endings). Otherwise a lack of accurate intervals/pitches.  
 Individual pitches include a tonal center; however, with inaccurate intervals/pitches.  
 Individual pitches lacked a tonal center and performance lacked overall tonality.

### Rhythm Rating

|   |   |   |
|---|---|---|
| 5 | 5 | 5 |
| 4 | 4 | 4 |
| 3 | 3 | 3 |
| 2 | 2 | 2 |
| 1 | 1 | 1 |

Performance was accurate with precise rhythm.  
 Performance was nearly accurate with a minimal amount of imprecise rhythm.  
 Performance included a consistent tempo and recognizable meter; however, included short, continuous sections of imprecise rhythm.  
 Performance included portions of consistent and inconsistent tempo and recognizable and unrecognizable meter with imprecise rhythms.  
 Performance included a lack of consistent tempo and recognizable meter.

### Expression Rating

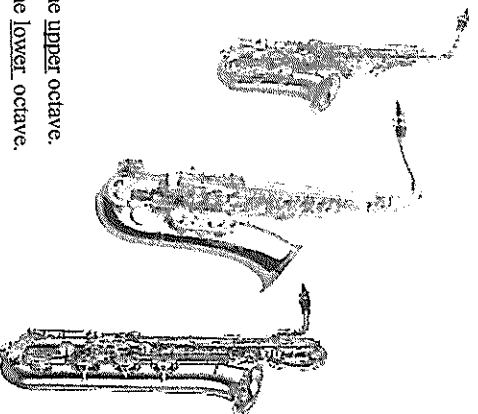
|                          |                          |                          |
|--------------------------|--------------------------|--------------------------|
| <input type="checkbox"/> | <input type="checkbox"/> | <input type="checkbox"/> |
| <input type="checkbox"/> | <input type="checkbox"/> | <input type="checkbox"/> |
| <input type="checkbox"/> | <input type="checkbox"/> | <input type="checkbox"/> |
| <input type="checkbox"/> | <input type="checkbox"/> | <input type="checkbox"/> |

Performs slurs correctly when indicated.  
 Tongues correctly when indicated.  
 Has a full and well supported tone quality  
 Demonstrates an understanding of dynamics.  
 Performs with a sense of phrase, breathing in appropriate places.

### Executive Skill

|                          |                          |                          |
|--------------------------|--------------------------|--------------------------|
| <input type="checkbox"/> | <input type="checkbox"/> | <input type="checkbox"/> |
| <input type="checkbox"/> | <input type="checkbox"/> | <input type="checkbox"/> |
| <input type="checkbox"/> | <input type="checkbox"/> | <input type="checkbox"/> |
| <input type="checkbox"/> | <input type="checkbox"/> | <input type="checkbox"/> |

Feet are placed flat on the floor with back straight and body erect  
 Breath support including air control, direction, and speed to perform the upper octave.  
 Breath support including air control, direction, and speed to perform the lower octave.  
 Breath is taken through the mouth.  
 Correct horizontal and vertical instrument alignment with the body.



### Embouchure Rating

|   |   |
|---|---|
| 5 | 5 |
| 4 | 4 |
| 3 | 3 |
| 2 | 2 |
| 1 | 1 |

- Chin is held in a firm, flat position and chin muscles are drawn slightly downward.
- The lower teeth are covered by the fleshy upper part of the lower lip, but not biting.
- The upper teeth rest on the mouthpiece where the reed and mouthpiece meet
- The lips seal the mouthpiece creating equal pressure from all directions as if saying "O".
- A steady stream of air is used, while keeping the corners firm.

### Hand Position Rating

|   |   |
|---|---|
| 5 | 5 |
| 4 | 4 |
| 3 | 3 |
| 2 | 2 |
| 1 | 1 |

- LH – Thumb rests diagonally on the upper thumb rest with the tip touching the octave key; pinky rests on the G# key.
- RH – Thumb rests under the thumb rest on the flesh to the side and base of the nail; pinky rests on the C key.
- Both hands – Thumbs and forefingers form a "U" and fingers come across the instrument at right angles.
- Both hands – Fingers are curved and contact the buttons on the pads.
- Both hands – Wrists are flat and elbows are free from the body.

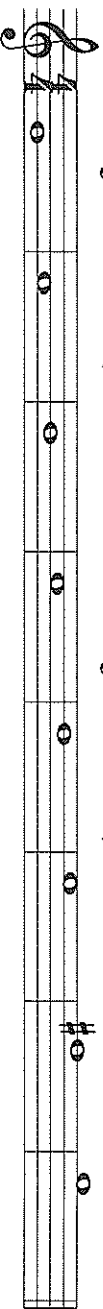
# Saxophones

## Practice this Page

### Only on the Days You Eat

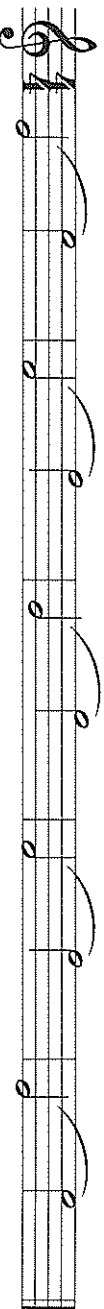
# 1

#### 1. G Major Scale (Concert B $\flat$ Major Scale)



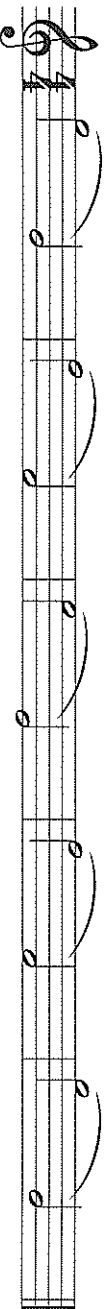
#### 2. Octave Slurs

Tongue only the first note of each measure. Play as smoothly as possible.

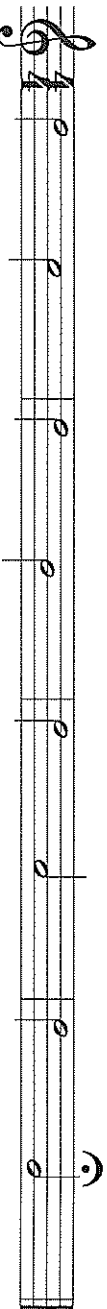


#### 3. More Lip Slurs

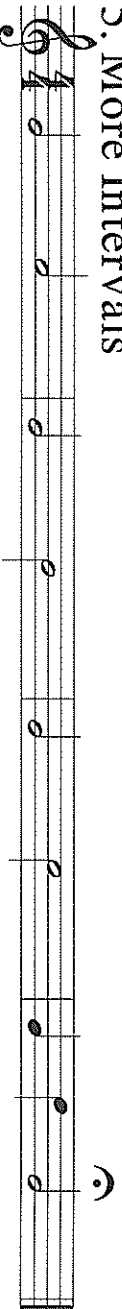
Lip slurs improve your tone, flexibility, and air control.



#### 4. Intervals

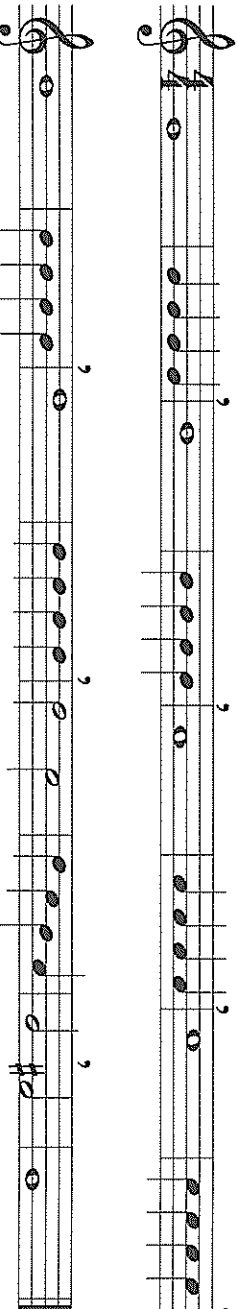


#### 5. More Intervals



#### 6. Sustained Tonguing

Breathe only where marked. Keep the air moving during the quarter notes.



# Saxophones

Practice this Page  
Only on the Days You Eat

## 1. F Major Scale (Concert A $\flat$ Major Scale)

A single musical staff in 4/4 time, starting with a treble clef. It contains the F major scale: F4 (quarter), G4 (quarter), A4 (quarter), B4 (quarter), C5 (quarter), D5 (quarter), E5 (quarter), F5 (quarter), G5 (quarter), A5 (quarter), B5 (quarter), C6 (quarter), B5 (quarter), A5 (quarter), G5 (quarter), F5 (quarter).

## 2. Octave Slurs

Stay relaxed while playing these slurs. The smoother...the better.

A single musical staff in 4/4 time, starting with a treble clef. It contains two measures of music. The first measure has a slur over a half note F4 and a quarter note G4. The second measure has a slur over a quarter note A4 and a half note B4.

A single musical staff in 4/4 time, starting with a treble clef. It contains two measures of music. The first measure has a slur over a half note C5 and a quarter note D5. The second measure has a slur over a quarter note E5 and a half note F5.

## 3. Slur - Low Register

A single musical staff in 4/4 time, starting with a treble clef. It contains two measures of music. The first measure has a slur over a half note F4 and a quarter note G4. The second measure has a slur over a quarter note A4 and a half note B4.

## 4. Tonguing

A single musical staff in 4/4 time, starting with a treble clef. It contains two measures of music. The first measure has a slur over a half note F4 and a quarter note G4. The second measure has a slur over a quarter note A4 and a half note B4.

## 5. More Slurs - Low Register

Tongue only the first note of each measure.

A single musical staff in 4/4 time, starting with a treble clef. It contains two measures of music. The first measure has a slur over a half note F4 and a quarter note G4. The second measure has a slur over a quarter note A4 and a half note B4.

A single musical staff in 4/4 time, starting with a treble clef. It contains two measures of music. The first measure has a slur over a half note F4 and a quarter note G4. The second measure has a slur over a quarter note A4 and a half note B4.

# Saxophones

Practice this Page

Only on the Days You Eat

## 1. C Major Scale (Concert Eb Major Scale)

Musical notation for the C Major Scale (Concert Eb Major Scale) in 4/4 time. The scale is written on a single staff in treble clef, starting on middle C (C4) and ascending to C5. The notes are: C4, D4, E4, F4, G4, A4, B4, C5. The scale is written as a single line of music with a slur over the entire scale.

## 2. Slurs Low Register

Musical notation for Slurs Low Register in 4/4 time. The scale is written on a single staff in treble clef, starting on middle C (C4) and ascending to C5. The notes are: C4, D4, E4, F4, G4, A4, B4, C5. The scale is written as a single line of music with a slur over the entire scale.

## 3. Octave Slurs

Musical notation for Octave Slurs in 4/4 time. The scale is written on a single staff in treble clef, starting on middle C (C4) and ascending to C5. The notes are: C4, D4, E4, F4, G4, A4, B4, C5. The scale is written as a single line of music with a slur over the entire scale.

## 4. Intervals

Hear each note in your head.

Musical notation for Intervals in 4/4 time. The scale is written on a single staff in treble clef, starting on middle C (C4) and ascending to C5. The notes are: C4, D4, E4, F4, G4, A4, B4, C5. The scale is written as a single line of music with a slur over the entire scale.

## 5. Dynamics

Musical notation for Dynamics in 4/4 time. The scale is written on a single staff in treble clef, starting on middle C (C4) and ascending to C5. The notes are: C4, D4, E4, F4, G4, A4, B4, C5. The scale is written as a single line of music with a slur over the entire scale. The dynamics are marked as *f* (forte) and *p* (piano).

## 6. Technique

Musical notation for Technique in 4/4 time. The scale is written on a single staff in treble clef, starting on middle C (C4) and ascending to C5. The notes are: C4, D4, E4, F4, G4, A4, B4, C5. The scale is written as a single line of music with a slur over the entire scale.



# Saxophones

Practice this Page  
Only on the Days You Eat

## 1. D Major Scale (Concert F Major Scale)

A single musical staff in treble clef with a 4/4 time signature. The scale is written as a sequence of quarter notes: D4, E4, F#4, G4, A4, B4, C5, B4, A4, G4, F#4, E4, D4. The key signature has one sharp (F#).

## 2. Octave Slurs

Tongue only the first note of each measure. The smoother...the better.

Two musical staves in treble clef with a 4/4 time signature. The top staff shows a sequence of quarter notes: D4, E4, F#4, G4, A4, B4, C5, B4, A4, G4, F#4, E4, D4. The bottom staff shows the same sequence with slurs connecting notes across the octave. The first note of each measure is marked with a tongue symbol.

## 3. Slurs - Low Register

A single musical staff in treble clef with a 4/4 time signature. The scale is written as a sequence of quarter notes: D4, E4, F#4, G4, A4, B4, C5, B4, A4, G4, F#4, E4, D4. Slurs are placed under the first four notes of each measure.

## 4. Articulation

Follow the articulations closely. Each measure of quarter notes should sound different.

A single musical staff in treble clef with a 4/4 time signature. The scale is written as a sequence of quarter notes: D4, E4, F#4, G4, A4, B4, C5, B4, A4, G4, F#4, E4, D4. Each measure contains a different articulation symbol (accents, slurs, and breath marks) over the quarter notes.

## 5. Chromatic Scale

Try to do each line in one breath. You may need to look up the fingerings to a couple notes.

Two musical staves in treble clef. The top staff shows a chromatic scale: D4, C#4, B4, A4, G4, F#4, E4, D4, C#4, B4, A4, G4, F#4, E4, D4. The bottom staff shows the same chromatic scale with a key signature of one flat (Bb).